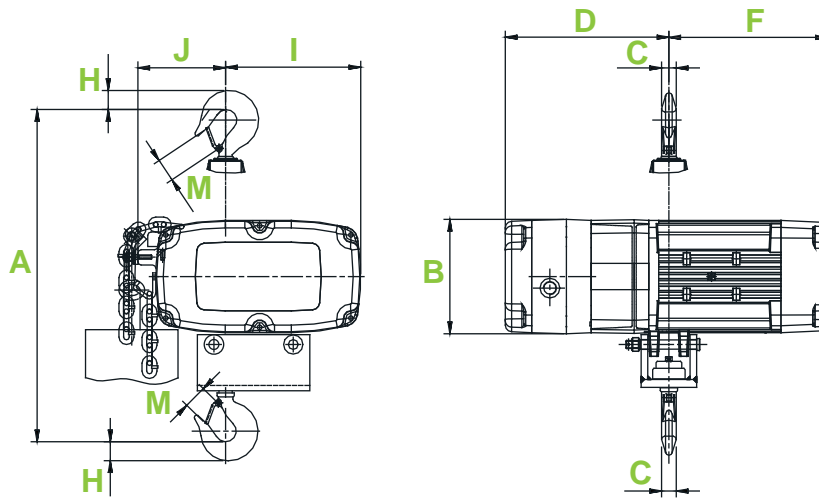


**SAFETY FEATURES**

- **DC Motor Brake:** With two-side single disk brake, electro-magnetic brake actuates synchronously in the event of power failure to ensure the operation safety while loading.
- **Overload Slipping Clutch:** Protects the hoist from damage of overload, and ensures the life-span of chain hoist.
- **Over-Heat Protection:** With built-in heat detector, when motor's inside working temperature reaches 140(±5) Celsius degree, the protection mechanism will trigger, and not allow lifting the load. Instead, it permits coming down to release the load.
- **Gear Limit Switch (only applied for LVC version):** Upper and lower limit switches are fitted to switch off the power simultaneously in the case of over lifting or lowering position.
- **Phase Protection (only applied for LVC version):** Built with phase error relay, in case of any phase missing or incorrect, the machine will not be in active, ensuring the safety and durability to all components.

Capacity ( Kg )	Model	Speed (m/min) 50Hz/60Hz	Fall No.	Load Chain ( Dia x Pitch ) ( mm )	Motor ( Kw x Pole )	Weight of hoist (Kg)
2000	RH-2000	3.3 / 4.0	2	Ø 7.1 x 20.2	1.5 x 2	62
1000	RH-1000P	3.3 / 4.0	1	Ø 7.1 x 20.2	0.75 x 4	47
	RH-1000S4	4.0 / 4.8	1	Ø 7.1 x 20.2	0.75 x 4	47
	RH-1000	3.3 / 4.0	1	Ø 7.1 x 20.2	0.75 x 4	47
	RH-1000LV					
	RH-1000CV					
500	RH-500	4.0 / 4.8	1	Ø 6.3 x 19.1	0.40 x 4	42
250	RH-250	4.0 / 4.8	1	Ø 4 x 12.0	0.25 x 4	30

**DIMENSIONS: ( MM )**



Model	Dimension ( mm )								
	A	B	C	D	F	H	I	J	M
RH-250	410	135	18	205	175	28	165	85	25
RH-500	600	156	23	247	221	33	185	105	30
RH-1000	650	156	23	247	221	33	185	105	30
RH-1000LV	650	156	23	247	221	33	185	105	30
RH-1000CV	650	156	23	247	221	33	185	105	30
RH-1000P	650	156	23	247	221	33	185	105	30
RH-1000S4	650	156	23	247	221	33	185	105	30
RH-2000	860	170	27	275	240	39	170	170	30